

Red-backed Shrike (*Lanius collurio*) - 10-years population trends (1994-2003)

(V. Holáň, Ten years of the Czech Shrike Working Group. CSO News, 58:15-18, 2004.)

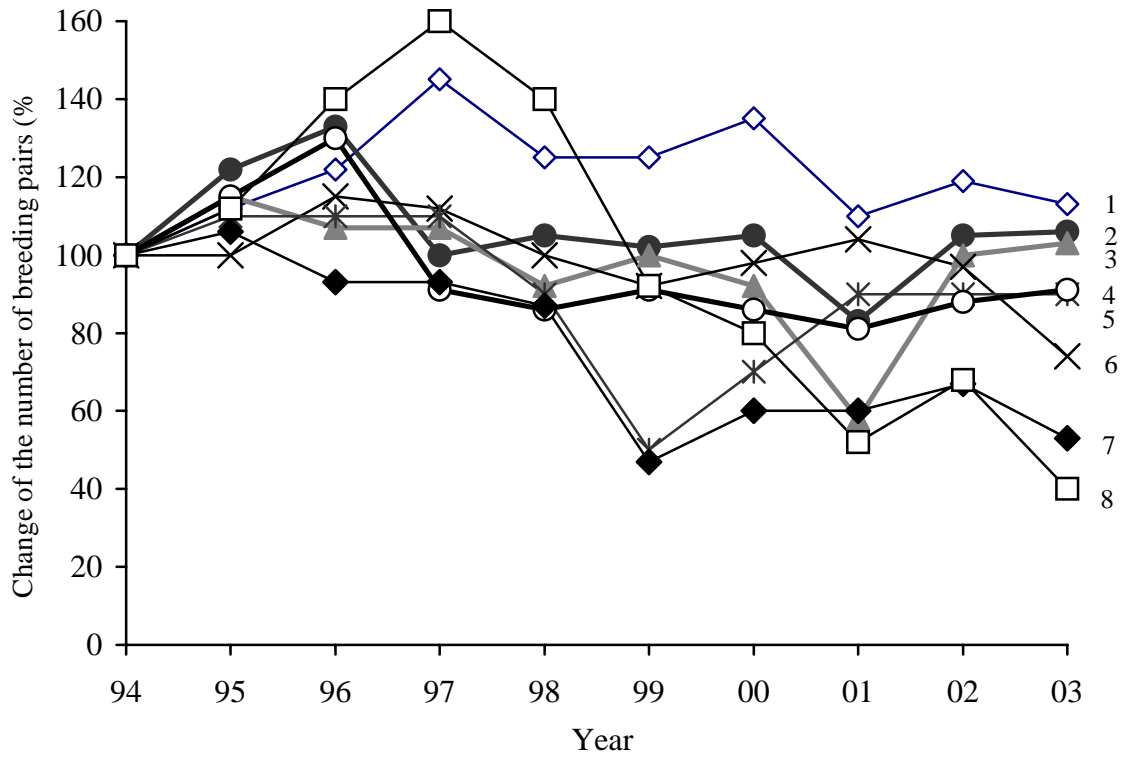


Fig. 1: Populations trends of Red-backed Shrike in individual regions of the Czech Republic in period 1994-2003. Number of breeding pairs in individual regions in 1994 was taken as 100%.

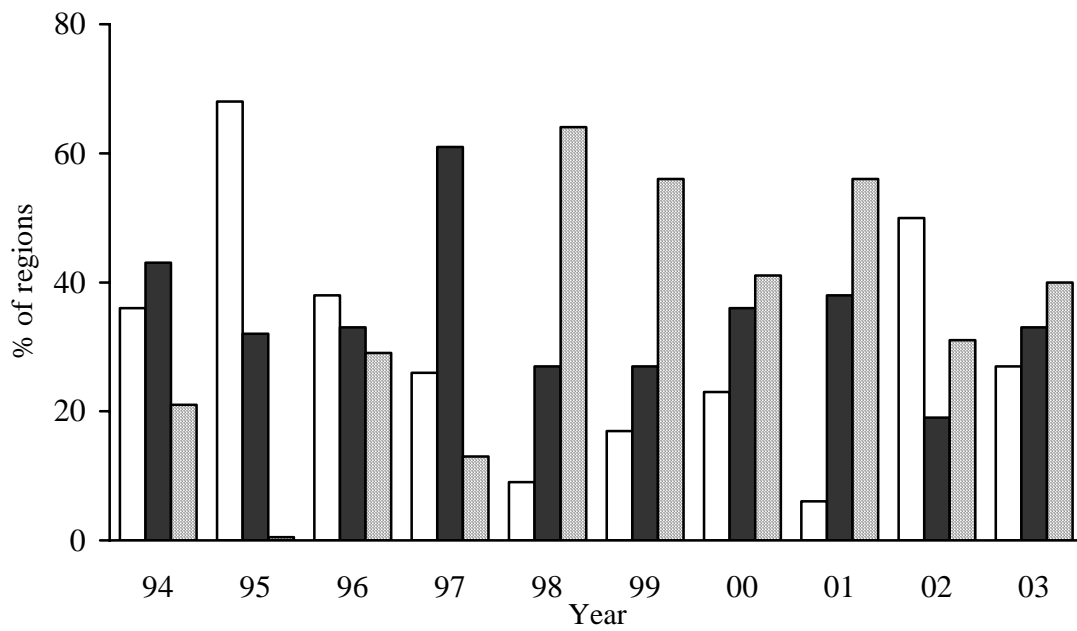


Fig. 2: Changes in the number of breeding pairs of Red-backed Shrike in a particular year in individual regions of the Czech Republic in the period 1994-2003. The figure shows the percentage of regions with an increase (open bars), decrease (crossed bars) or with the same number (black bars) of breeding pairs in a particular year in comparison with the previous year.

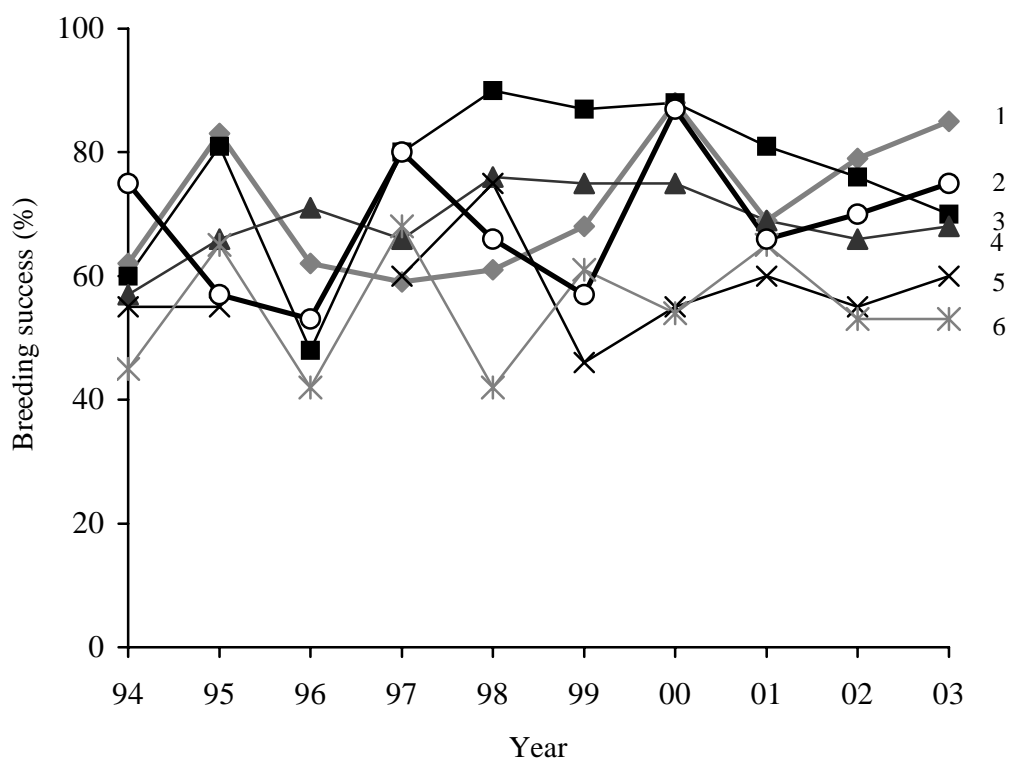


Fig. 3: Breeding success (%) of Red-backed Shrike in selected regions in the Czech Republic in the period 1994-2003.